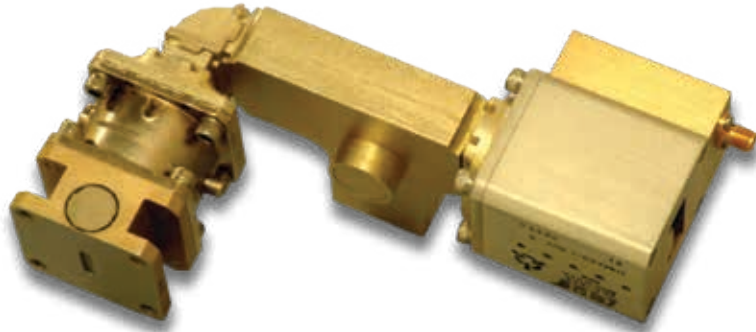


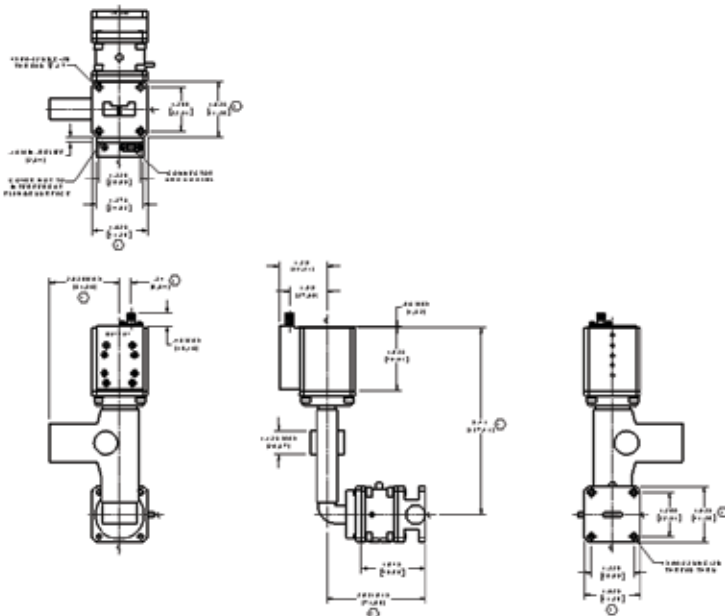
## Communications & Power Industries Limiter Attenuator



Passive, X-Band Pre-TR, TR Limiter with non-reflective integral continuously variable attenuator.

With a history of producing high quality products, we can help you with your limiter attenuator.

Contact us at [BMDMarketing@cpii.com](mailto:BMDMarketing@cpii.com) or call us at +1 978-922-6000.



### FEATURES:

- Frequency range: 9.4 - 10.1 GHz
- Peak power: 6 kW
- Duty cycle: 0.01
- Pulsewidth: up to 40  $\mu$ Sec
- Insertion loss: 1.25 dB max
- VSWR: 1.4:1 max
- Flat leakage: 50 mW max
- Spike leakage: 500 mW max
- Breakdown power: 50 mW max
- Recovery time (1 dB):
  - Pulsewidth < 10  $\mu$ S: 5  $\mu$ S max
  - Pulsewidth > 10  $\mu$ S: 10  $\mu$ S max
- 0 - 36 dB attenuator

### BENEFITS:

- Wide pulsewidth
- Integral variable attenuator

### APPLICATIONS:

- Specification variations available for various market uses